





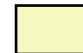
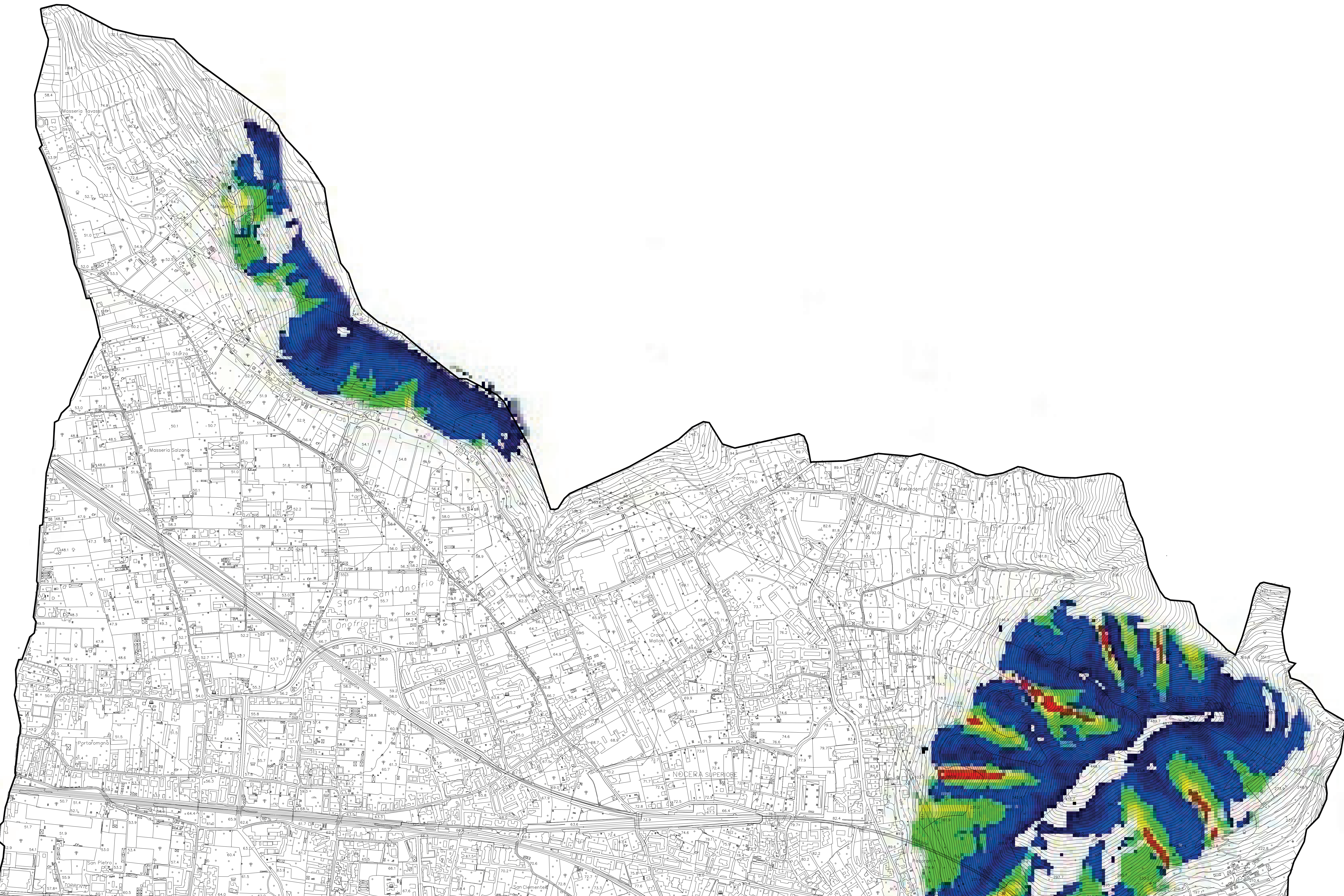


STEADY STATE RAINFALL

-  unconditionally unstable
-  0 - 50 (mm/day)
-  50 - 100 (mm/day)
-  100 - 200 (mm/day)
-  200 - 400 (mm/day)
-  400 - 10000 (mm/day)
-  unconditionally unstable



Proiezione: UTM - Fuso: 33
Datum: WGS84 - Unità: metri
Base Cartografica:
Carta Tecnica Regionale della Campania del 2004



Il Piano Urbanistico Comunale
di Nocera Superiore

Carta della stabilità distribuita

scala 1:5.000

Gruppo di progettazione

- ing. Daniele Laudonio
Responsabile del Servizio Urbanistica
Responsabile del Procedimento
- arch. Florigia Gigantino
Responsabile del Servizio Patrimonio
Valutazione Ambientale Strategica
- ing. Luciano Ragazzi
Responsabile del Servizio Sistemi Informativi

geol. Giuseppe D'Amore
Studio geologico

-  urb. Daniele Rallo
-  urb. Raffaele Gerometta
-  arch. Antonio Oliviero
Coordinamento scientifico

arch. Giosuè Gerardo Saturno
Urbanista ed esperto GIS

B.2.10.a

Giugno 2016